

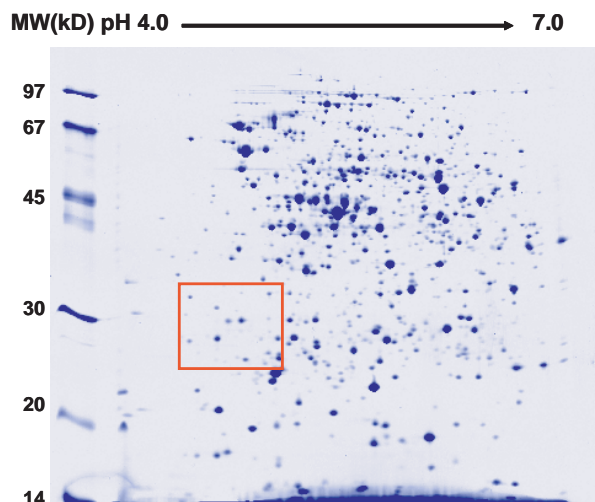
Protein Identification Using the NanoMate[®]

Obtain an ID in 6 minutes per sample.

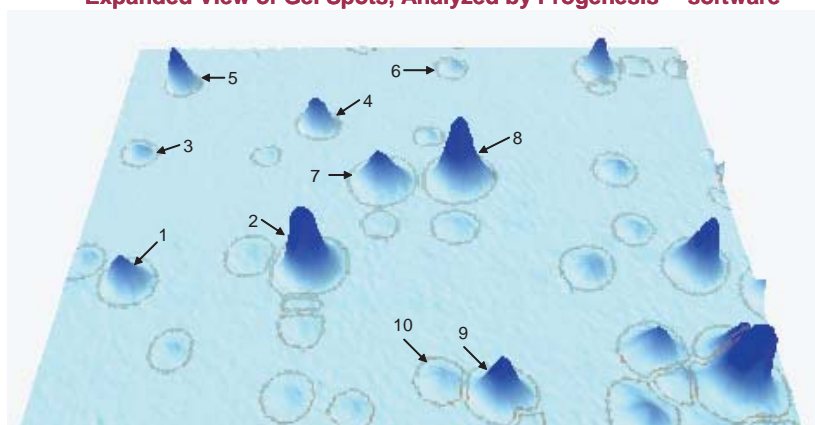
- Identification of faint gel spots with high quality electrospray MS/MS
- Convert low abundance MS/MS data into high quality identifications with infusion for improved signal-to-noise
- Achieve 75 fmol detection limits of protein loaded on a gel*
- Zero sample-to-sample carryover



2D Gel for 80 µg of *E coli* Crude Cell Extract



Expanded View of Gel Spots, Analyzed by Progenesis[™] software



Automated NanoESI/MS/MS Results for 2D Gel Spots

Spot Number	Number of Peptide Hits	Sequence Coverage, %	Protein Identification	MW (kDa)	pI
1	3	17.3	NC_002655 orf, hypothetical protein	20.99	4.52
2	4	22.3	Phage lambda replication	21.80	4.68
3	4	22.6	Phosphoglycolate phosphotase	27.39	4.58
4	2	12.9	Enhancing lycopene biosynthesis protein 2	22.98	4.68
5	6	23.1	3-mercaptopyruvate sulfurtransferase	30.81	4.56
6	2	8.8	NC_000913 orf, hypothetical protein	25.87	4.71
7	3	17.4	FKBP-type peptidyl-prolyl cis-trans isomerase	20.85	4.86
8	3	17.4	FKBP-type peptidyl-prolyl cis-trans isomerase	20.85	4.86
9	3	18.5	FKBP-type 22KDA peptidyl-prolyl cis-trans isomerase	22.22	4.85
10	6	37.2	Nitrate/nitrite response regulator	23.58	4.82

*For BSA standard, data not shown

Authors:
Sheng Zhang and Kevin Howe, Advion BioSciences, Inc.
Acknowledgement:
Yong Yang and Theodore Thannhauser, USDA/ARS, Cornell University

Unleashing the Power of Mass Spectrometry[™]